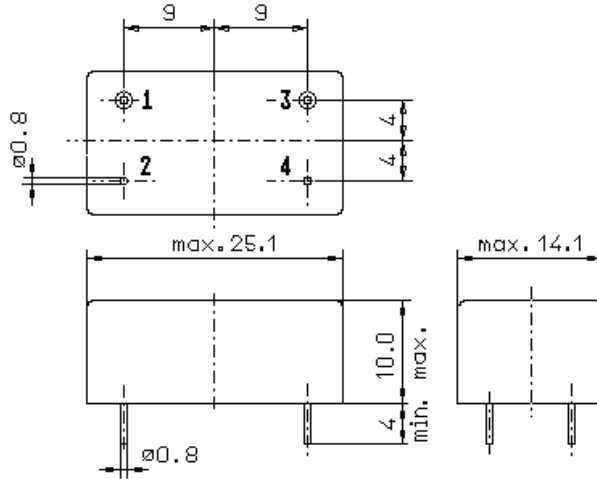


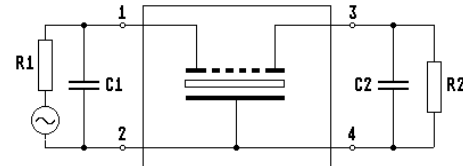
Specification for monolithic crystal filter **MQF 101.2656-1000/01**

1. General

1.1. Case:



GM3



- | | |
|-----------------------------------|----------------------|
| 1.2. Type name: | MQF 101.2656-1000/01 |
| 1.3. Number of poles: | 2, 3 rd overtone |
| 1.4. Operating temperature range: | -20°C to +70°C |
| 1.5. Storage temperature range: | -45°C to +85°C |

2. Electric values

- | | |
|---|---|
| 2.1. Nominal centre frequency fo: | 101.2656 MHz |
| 2.2. Pass band | |
| 2.2.1. Bandwidth between 3 dB - frequencies: | > fo ± 5.0 kHz |
| 2.2.2. Ripple: | < 1.0 dB at fo ± 3.0 kHz |
| 2.2.3. Insertion loss: | < 2.5 dB |
| (measured on smallest attenuation in pass band) | |
| 2.3. Stop band | |
| 2.3.1. fo ± 50 kHz | > 30 dB |
| 2.3.2. Alternate attenuation: in lower stop band | > 40 dB |
| 2.3.3. Alternate attenuation: in upper stop band | > 35 dB (except spurious) |
| 2.4. Terminating impedance (input and output): | 50 Ω // 0 pF |
| 2.5. Maximum input level: | -10 dBm |
| 3. Marking on the case: | manufacturer, date code
MQF 101.2656-1000/01 |
| 4. Environment conditions: | Corresponding to Telefilter CF001 |

Edited by: _____ date: _____ name: _____