

Monolithic crystal filter

MQF10.7-0750/20



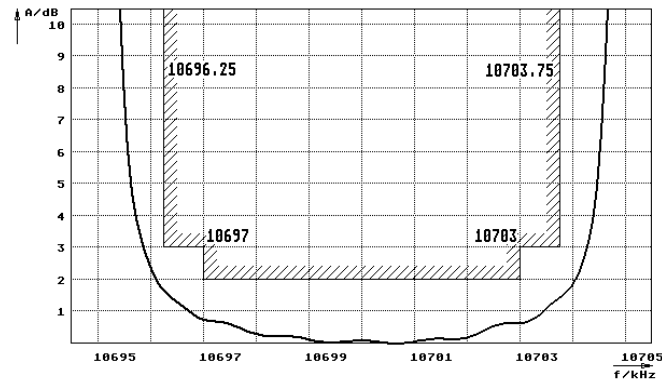
Application

- 10 pol filter
- i.f.- filter
- use in mobile and stationary transceivers

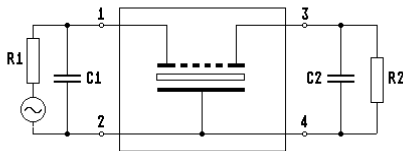
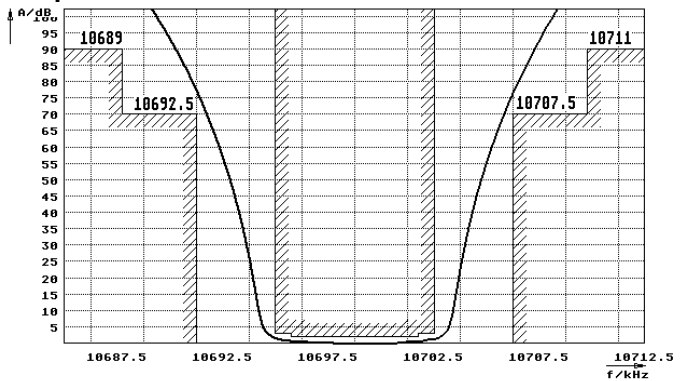
Limiting values		Unit	Value
Nominal frequency	f_0	MHz	10.7
Insertion loss		dB	< 4.0
Pass band at 3.0dB		kHz	$\pm > 3.75$
Ripple in pass band	$f_0 \pm 3$ kHz	dB	< 2.0
Stop band attenuation	$f_0 \pm 7.5$ kHz	dB	> 70
	$f_0 \pm 11$ kHz	dB	> 90
Alternate attenuation	$f_0 \pm 11 \dots 500$ kHz	dB	> 90
	Terminating impedance Z		
R1 C1		Ohm/pF	910 25
R2 C2		Ohm/pF	910 25
Operating temp. range		°C	-20... +70
Storage temp. range		°C	-40... +90
Environment conditions			according to CF002

Characteristics MQF10.7-0750/20

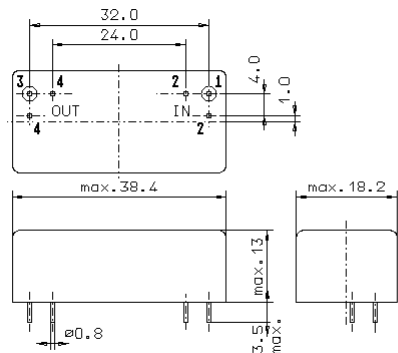
Pass band



Stop band



- Pin connections:
- 1 Input
 - 2 Ground-Input
 - 3 Output
 - 4 Ground-Output



GM17