

Monolithic crystal filter

MQF10.7-1200/14



Application

- 6 pol filter
- i.f.- filter
- use in mobile and stationary transceivers

Limiting values

		Unit	Value
Nominal frequency	f_0	MHz	10.7
Centre frequency	at 25°C	MHz	10.7 ± 300 Hz
Insertion loss		dB	< 3.0
Pass band at 3.0dB		kHz	$\pm > 6$
Ripple in pass band	$f_0 \pm 4$ kHz	dB	< 2.0
Stop band attenuation	$f_0 \pm 14$ kHz	dB	> 45
	$f_0 \pm 20$ kHz	dB	> 65
Alternate attenuation	$f_0 \pm 40...300$ kHz	dB	> 80 except spurious

Terminating impedance Z

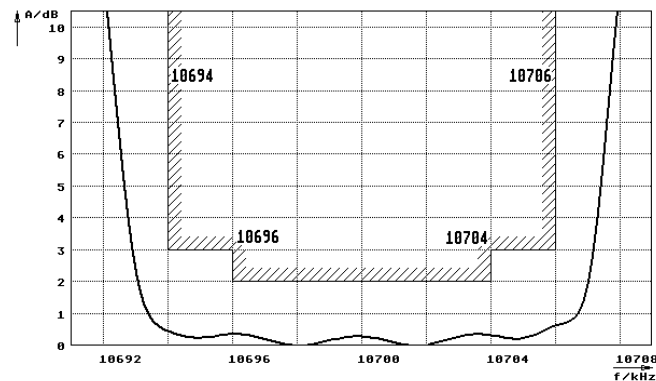
R1 C1	Ohm/pF	3900 0
R2 C2	Ohm/pF	3900 0

Operating temp. range
Storage temp. range
Environment conditions

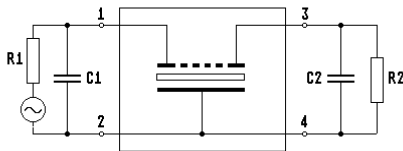
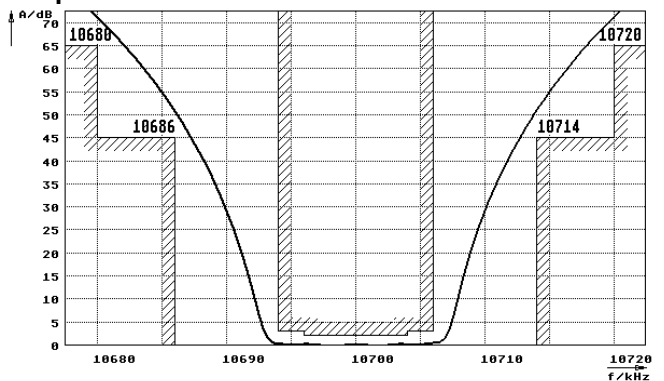
°C	-20... +70
°C	-45... +85
	according to CF001

Characteristics MQF10.7-1200/14

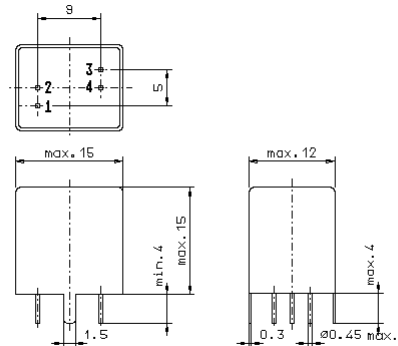
Pass band



Stop band



- Pin connections:
- 1 Input
 - 2 Ground-Input
 - 3 Output
 - 4 Ground-Output



GV4