

Monolithic crystal filter

MQF10.7-1500/02



Application

- 4 pol filter
- i.f.- filter
- use in mobile and stationary transceivers

Limiting values

| | | Unit | Value |
|-----------------------|----------------------------|------|-------------|
| Nominal frequency | f_0 | MHz | 10.7 |
| Insertion loss | | dB | < 2.5 |
| Pass band at 3.0dB | | kHz | $\pm > 7.5$ |
| Ripple in pass band | $f_0 \pm 5$ kHz | dB | < 1.0 |
| Stop band attenuation | $f_0 \pm 25$ kHz | dB | > 40 |
| Alternate attenuation | $f_0 + 300 \dots 1000$ kHz | dB | > 65 |
| | $f_0 - 200 \dots 1000$ kHz | dB | > 80 |
| Spurious response | | dB | > 30 |

Terminating impedance Z

| | | | |
|----------------------|----|--------|-------------|
| R1 C1 | | Ohm/pF | 3000 1.5 |
| R2 C2 | | Ohm/pF | 3000 1.5 |
| Coupling capacitance | Ck | pF | 5.0 |

Operating temp. range

Storage temp. range
Environment conditions

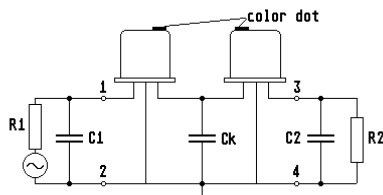
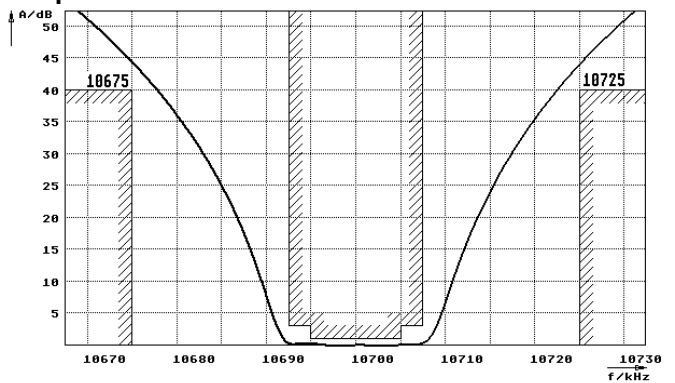
| | |
|----|--------------------|
| °C | -25... +70 |
| °C | -55... +85 |
| | according to CF001 |

Characteristics MQF10.7-1500/02

Pass band



Stop band



- Pin connections:
- 1 Input
 - 2 Ground-Input
 - 3 Output
 - 4 Ground-Output

