

Monolithic crystal filter

MQF10.7-1500/04



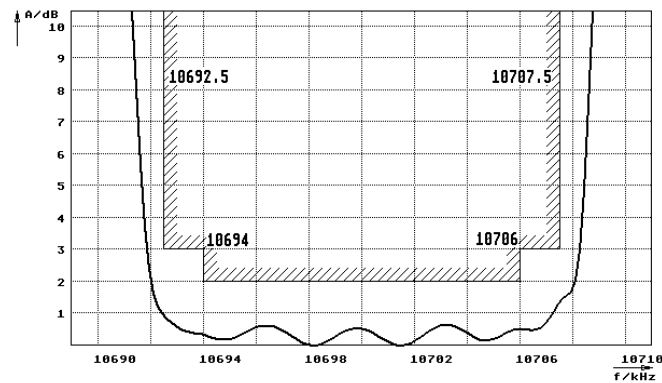
Application

- 8 pol filter
- i.f.- filter
- use in mobile and stationary transceivers

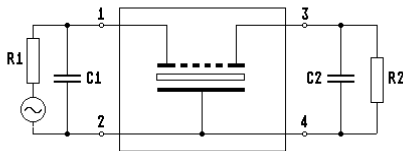
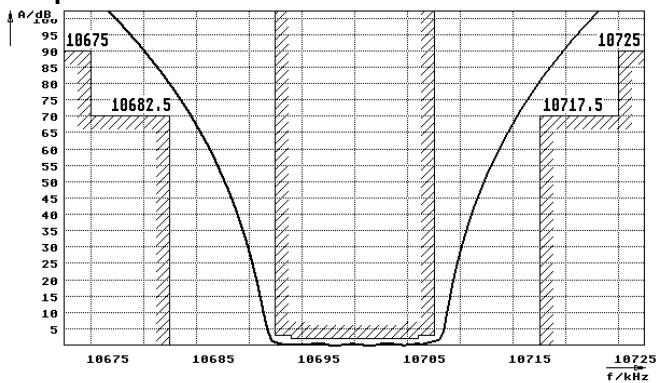
Limiting values		Unit	Value
Nominal frequency	f_0	MHz	10.7
Insertion loss		dB	< 3.5
Pass band at 3.0dB		kHz	$\pm > 7.5$
Ripple in pass band	$f_0 \pm 6$ kHz	dB	< 2.0
Stop band attenuation	$f_0 \pm 17.5$ kHz	dB	> 70
	$f_0 \pm 25$ kHz	dB	> 90
Alternate attenuation	$f_0 \pm 25...300$ kHz	dB	> 90
Terminating impedance Z			
R1 C1		Ohm/pF	3000 1.0
R2 C2		Ohm/pF	3000 1.0
Operating temp. range			
		°C	-40... +80
Storage temp. range			
		°C	-45... +85
Environment conditions			
			according to CF001

Characteristics MQF10.7-1500/04

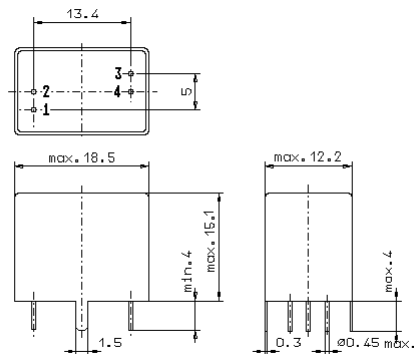
Pass band



Stop band



- Pin connections:
- 1 Input
 - 2 Ground-Input
 - 3 Output
 - 4 Ground-Output



GV5.1