

# Monolithic crystal filter

## MQF10.7-1500/31



### Application

- 10 pol filter
- i.f.- filter
- use in mobile and stationary transceivers

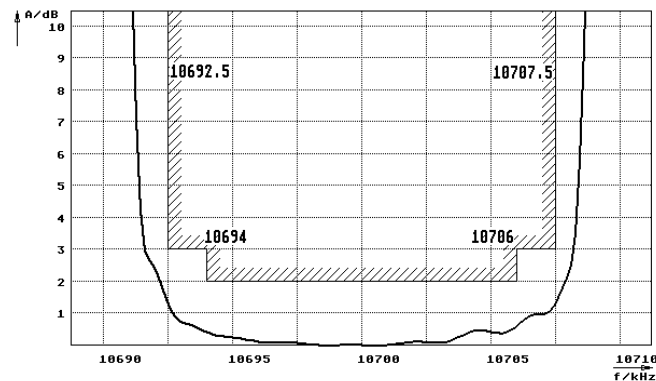
Limiting values		Unit	Value
Nominal frequency	$f_0$	MHz	10.7
Insertion loss		dB	< 4.0
Pass band at 3.0dB		kHz	$\pm > 7.5$
Ripple in pass band	$f_0 \pm 6$ kHz	dB	< 2.0
Stop band attenuation	$f_0 \pm 15$ kHz	dB	> 70
	$f_0 \pm 20$ kHz	dB	> 90
Alternate attenuation	$f_0 \pm 20...500$ kHz	dB	> 90 except spurious

Terminating impedance Z			
R1  C1		Ohm/pF	4700    0
R2  C2		Ohm/pF	4700    0

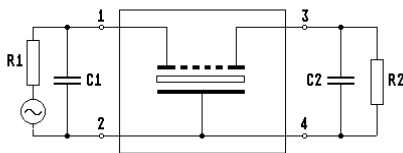
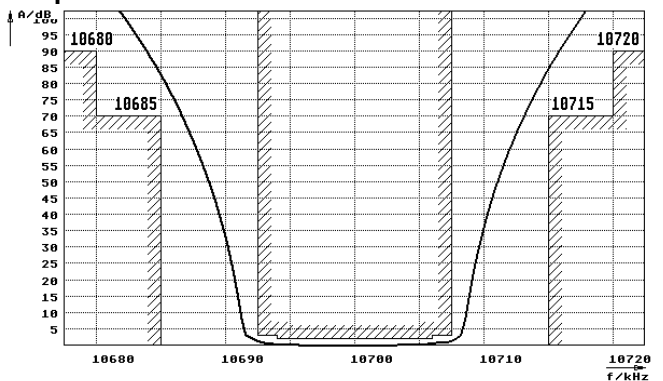
Operating temp. range		°C	-20... +70
Storage temp. range		°C	-45... +85
Environment conditions			according to CF001

### Characteristics MQF10.7-1500/31

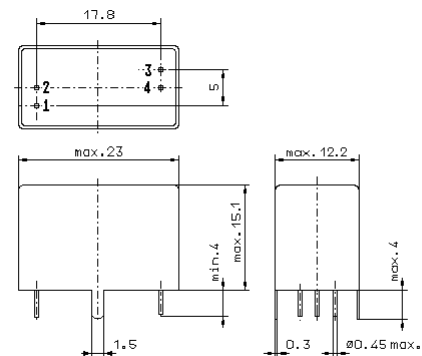
#### Pass band



#### Stop band



- Pin connections:
- 1 Input
  - 2 Ground-Input
  - 3 Output
  - 4 Ground-Output



GV6.2