

Monolithic crystal filter

MQF10.7-3000/02



Application

- 4 pol filter
- i.f.- filter
- use in mobile and stationary transceivers

Limiting values

		Unit	Value
Center frequency	f_0	MHz	10.7
Insertion loss		dB	≤ 2.5
Pass band at 3.0 dB		kHz	$\pm \geq 15.00$
Ripple in pass band	$f_0 \pm 10.00$ kHz	dB	≤ 1.0
Stop band attenuation	$f_0 \pm 40$ kHz	dB	≥ 30
	$f_0 \pm 50...300$ kHz	dB	> 40
Spurious responses		dB	> 30

Terminating impedance Z

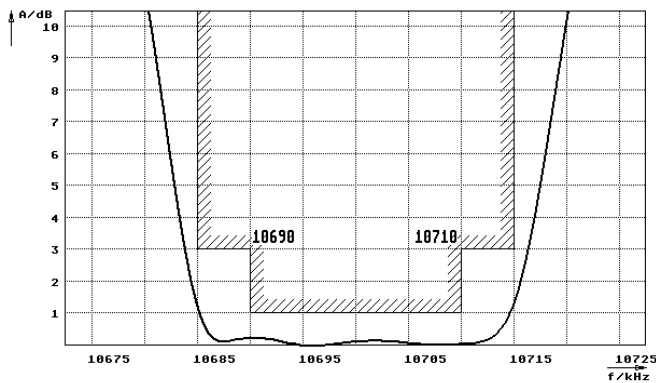
R1 C1		Ohm/pF	5500 -1
R2 C2		Ohm/pF	5500 -1
Coupling capacitance	Ck	pF	0.0

Operating temp. range

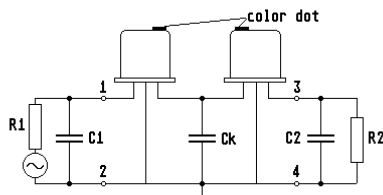
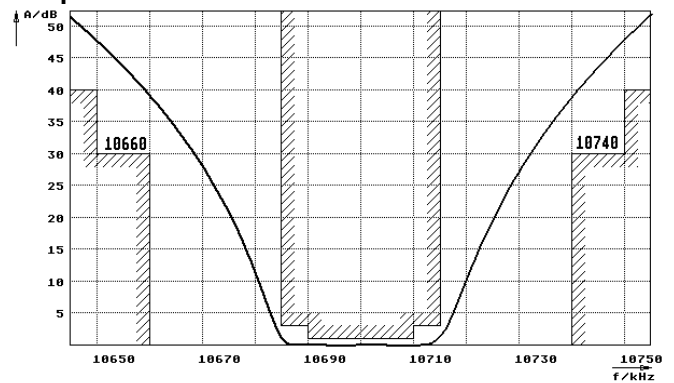
° C -20... +70

Characteristics MQF10.7-3000/02

Pass band



Stop band



- Pin connections:
- 1 Input
 - 2 Ground-Input
 - 3 Output
 - 4 Ground-Output

