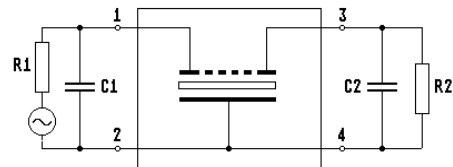
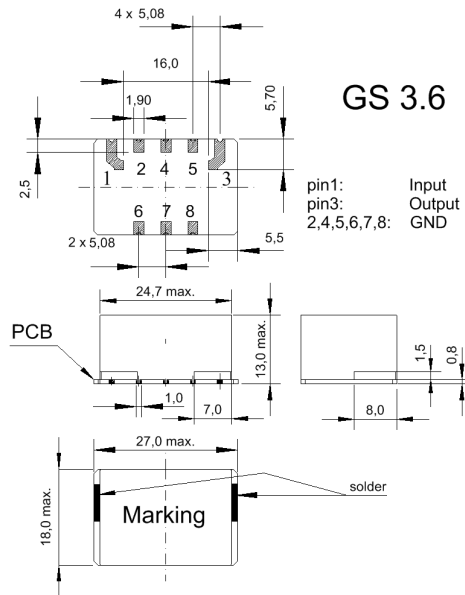


Specification for monolithic crystal filter:

**MQF 4.13667-1000/01**

**1. General**

1.1. Case:



- 1.2. Type name: MQF 4.13667-1000/01
- 1.3. Number of poles: 2, fundamental mode
- 1.5. Operating temperature range: -40°C to +85°C
- 1.6. Storage temperature range: -40°C to +120°C

**2. Electric values**

- 2.1. Nominal centre frequency fo: 4.13667 MHz
- 2.2. **Pass band**
  - 2.2.1. Bandwidth between 3 dB - frequencies: > fo ± 5.0 kHz
  - 2.2.2. Ripple: < 1.0 dB at fo ± 3 kHz
  - 2.2.3. Insertion loss: < 5.0 dB  
( measured on smallest attenuation in pass band )
- 2.3. **Stop band**
  - 2.3.1. fo ± 55 kHz > 30 dB
  - 2.3.2. Alternate attenuation > 35 dB (except spurious)
- 2.4. Terminating impedance ( input and output ): 50 Ω // 0 pF
- 2.5. Maximum Input Level: working/non damaged 0/+20 dBm
- 3. Marking on the case: firm, year week  
MQF 4.13667-1000/01
- 4. Environment conditions: MIL standard

Edited by: \_\_\_\_\_ date: \_\_\_\_\_ name: \_\_\_\_\_