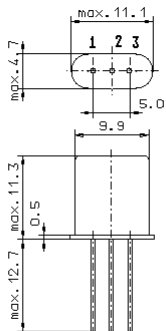


Specification for monolithic crystal filter:

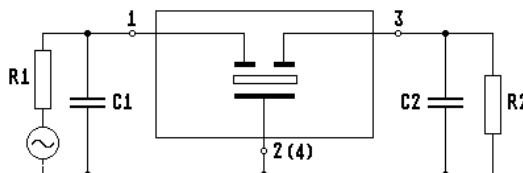
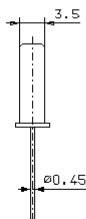
MQF 6.0 - 0750 / 01

1. General

1.1. Case:



GH3



- 1.2. Type name: MQF 6.0-0750/01
- 1.3. Number of poles: 2
- 1.4. Operating temperature range: -20°C to +70°C
- 1.5. Storage temperature range: -45°C to +85°C

2. Electric values

- 2.1. Nominal centre frequency fo: 6.0 MHz
- 2.2. **Pass band**
 - 2.2.1. Bandwidth between 3 dB - frequencies: > fo ± 3.75 kHz
 - 2.2.2. Ripple: < 1.0 dB at fo ± 2.5 kHz
 - 2.2.3. Insertion loss: < 2.0 dB
(measured on smallest attenuation in pass band)
- 2.3. **Stop band**
 - 2.3.1. fo ± 35 kHz: > 35 dB
 - 2.3.2. Alternate Attenuation: > 35 dB (except spurious)
- 2.4.1. Nomial input power level: 10 dBm
- 2.4.2. Maximal input power level: 30 dBm
- 2.5. Terminating impedance R//C (input and output): 5000 Ω // 0 pF
- 3. Marking on the case: manufacturer, date code
6.0-
0750/01
- 4. Environment conditions: Corresponding to Telefilter CF001

Edited by: _____ date: _____ name: _____