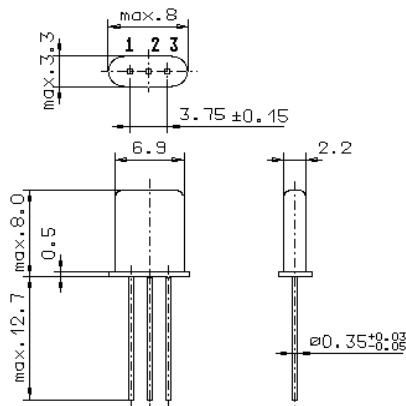


Specification for monolithic crystal filter

MQF 60.0-0400/02

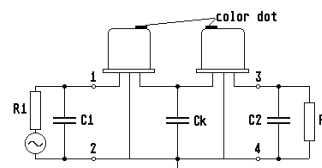
1. General

1.1. Case: 2 x GH 9



GH9

W



PLW

- 1.2. Type name: MQF 60.0-0400/02
- 1.3. Number of poles: 4, 3 rd overtone
- 1.4. Operating temperature range: -20°C to +70°C
- 1.5. Storage temperature range: -45°C to +85°C

2. Electric values

2.1. Nominal centre frequency f_0 : 60.0 MHz

2.2. Pass band

- 2.2.1. Bandwidth between 3 dB - frequencies: $\geq f_0 \pm 2.0$ kHz
- 2.2.2. Ripple: ≤ 1.0 dB at $f_0 \pm 1.0$ kHz
- 2.2.3. Insertion loss: ≤ 6.0 dB
(measured on smallest attenuation in pass band)

2.3. Stop band

- 2.3.1. $f_0 \pm 12$ kHz: ≥ 30 dB
- 2.3.2. Alternate attenuation: ≥ 40 dB (except spurious)
- 2.3.3. Spurious responses: ≥ 25 dB

2.4. Terminating impedance (input and output): 2000 Ω // -0.2 pF

2.4.1. Coupling capacitance C_c : 0.4 pF

3. Marking on the case: DSL 60.0/F
0400 date code

4. Environment conditions: Corresponding to Telefilter CF001

Edited by: _____ date: _____ name: _____